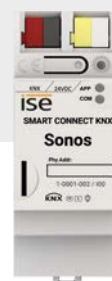
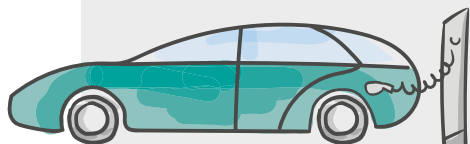
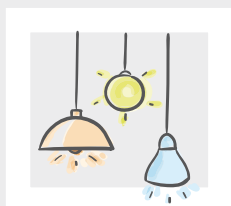


# PRODUCTS

We make  
your home  
smarter



# Smart buildings need smart ideas.

Every day, we work to ensure that KNX can do more to make smart living spaces even smarter. Our vision is to integrate every device into the building automation with KNX.

This catalogue presents everything about our products, which we have developed with exceptional quality, in-depth know-how and a profound passion for smart living.



SDA

SONOS

Vaillant



Saunier  
Duval

Panasonic

hue



# SMART HIGHLIGHTS



## E-MOBILITY: FULL CHARGE AHEAD

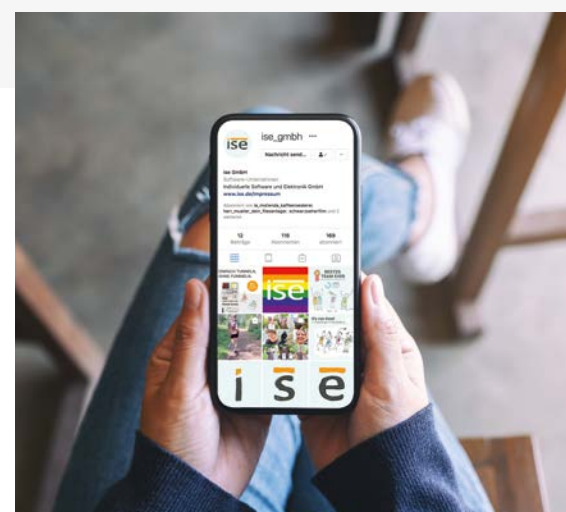
Our e-charge II is brand new. Now with Dynamic Load Management (DLM). Your electric vehicle is reliably charged, even when many household appliances are running. The available electricity is evenly distributed to all charging points, preventing the household connection from becoming overloaded.

From page 14



## OTHERS: STORIES, PRODUCTS AND INSIGHTS BEHIND THE SCENES

If you've always wanted to know how we work, who we are and what we like to do, check us out on Instagram.



NEW:  
It uses  
VPN now



## REMOTE ACCESS AND MAINTENANCE: JUST TUNNEL WITHOUT FUMBLING

With the latest update V6.1 the SMART CONNECT KNX Remote Access gets a comprehensive VPN feature. Thereby the Remote Access serves as a VPN server.

From page 8



## OVERVIEW: EVENTS AND WEBINARS

Experience us and our products at the following trade shows and partner events. Here we inform you about the latest products and developments.

With the participation in our ise webinars you will gain practical know-how, directly and individually. Register simply and conveniently by email!  
[ise.de/en/news/events](https://ise.de/en/news/events)



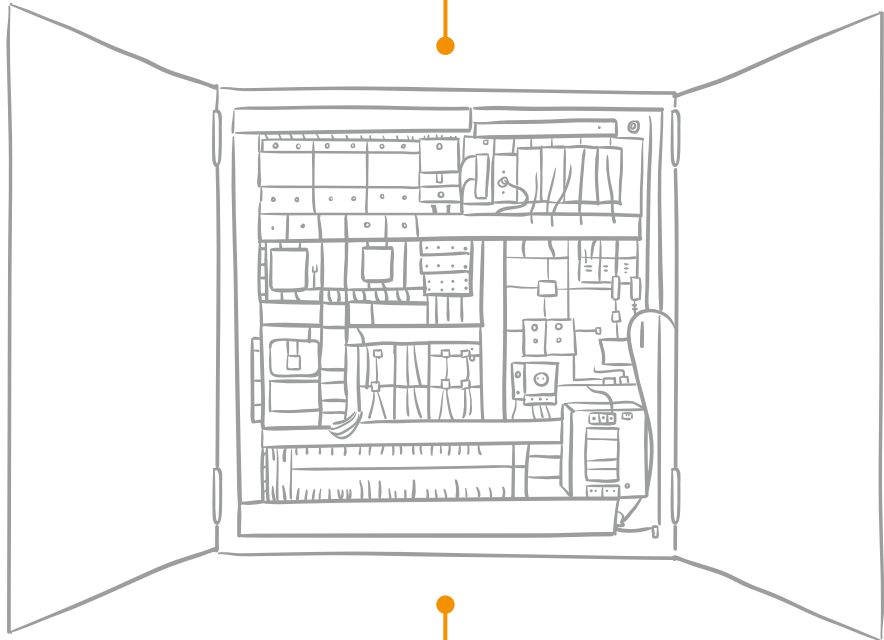
## VIRTUAL CELEBRATION: 25 YEARS ISE

Since 03/15/2021 ise Individuelle Software und Elektronik GmbH exists a quarter of a century! In the 25 years since its foundation, the staff has grown to over 135 creative minds. The innovative product range around the successful SMART CONNECT KNX series and SMART APP KNX is constantly expanding. There was also a celebration!  
[ise.de/en/news/article/25-years-ise](https://ise.de/en/news/article/25-years-ise)
















# PRODUCT PORTFOLIO

## CONTENT



PAGE

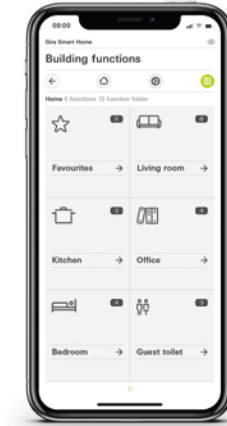
	<b>SMART CONNECT KNX Remote Access</b> BE ON THE MOVE YET STILL AT HOME	<b>8</b>
	<b>SMART CONNECT KNX e-charge II</b> CHARGE CLEVER WITH E-CHARGE II	<b>14</b>
	<b>SMART CONNECT KNX Sonos</b> CAN YOU HEAR IT? SONOS IS ROCKING OUT WITH KNX	<b>18</b>
	<b>SMART CONNECT KNX Hue</b> LIGHT ON, DIMMED OR BRIGHT – NO APP REQUIRED	<b>22</b>
	<b>SMART CONNECT KNX Vaillant</b> COSY WARM AND EFFICIENT – VAILLANT SNUGGLES UP WITH KNX	<b>26</b>
	<b>SMART CONNECT KNX viega</b> INNOVATIVE SINGLE-ROOM CONTROL – NOW, VIEGA AND KNX TAKE CARE OF THINGS TOGETHER	<b>30</b>
	<b>SMART CONNECT KNX Panasonic</b> SMART ENTERTAINMENT FOR YOUR HOME WITH PANASONIC AND KNX	<b>32</b>
	<b>SMART APP KNX Axis</b> KNX NOW HAS EYES	<b>34</b>
	<b>SMART CONNECT KNX Saunier Duval</b> COSY WARM AND EFFICIENT – SAUNIER DUVAL SNUGGLES UP WITH KNX	<b>38</b>
	<b>SMART CONNECT KNX Programmable</b> EVERYTHING'S POSSIBLE WITH THE PROGRAMMABLE	<b>40</b>
	<b>POWERED BY</b> <b>PROGRAMMABLE</b>	
	OUR CATEGORY FOR PRODUCTS BASED ON THE SMART CONNECT KNX PROGRAMMABLE	<b>41</b>
	<b>KNX RF USB-STICK</b> ACCESS TO YOUR KNX INSTALLATION SIMPLY VIA RADIO	<b>42</b>
	<b>TEST LIVING IN A KNX HOME</b> EXPERIENCE ISE PRODUCTS LIVE	<b>43</b>
	<b>SMART CONNECT Modbus Vaillant</b> EASY ACCESS ON VAILLANTS GEOTHERM/3 HEAT PUMP	<b>44</b>
	<b>SALES, SUPPORT &amp; CONTACT</b>	<b>46</b>



# BE ON THE MOVE YET STILL AT HOME

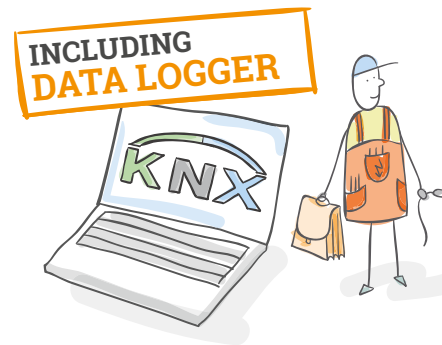
## SMART CONNECT KNX Remote Access

Gira X1 App and Gira X1 Server



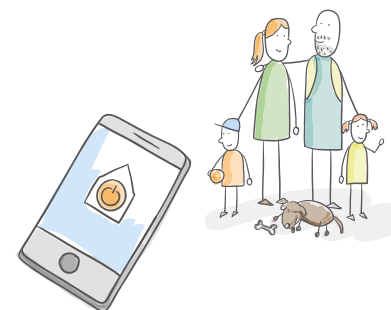
### Remote maintenance from anywhere

It has never been so secure and uncomplicated to connect to the KNX system remotely. You can forget about expensive house calls from your system integrator. Desired changes and system maintenance can be carried out quickly and individually, anywhere in the world – even while on the go.



### Remote diagnostics anywhere at any time

No visit to the customer, no need to go online when an error occurs. The data logger has the data, you have the solution.



### Access via VPN NEW!

The latest V6.1 update provides the SMART CONNECT KNX Remote Access with a comprehensive VPN feature with the Remote Access acting as a VPN server. This allows you to work in the remote network without needing to make complicated router settings. Also, you can maintain not only KNX systems remotely, but any other system, too.

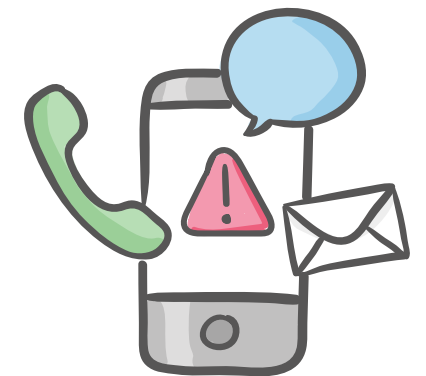


### Important events on your smartphone

Would you like to know whether everything is OK at home? Let your house tell you. You'll receive messages on your smartphone, e.g. when your smoke detector is activated or when someone rings your doorbell. You can decide whether you would like to be informed by telephone call, text message or e-mail. You can also receive images from the camera and values from the KNX (e.g. room temperature).

Our remote access provides support for up to 50 notifications at different danger levels. Is it just someone ringing the doorbell or has the smoke detector gone off? You will receive messages on your smartphone.

Even better: you can configure each trigger for notifications individually based on filters, conditions or hysteresis. For example, you will only receive a notification of temperature when the room temperature drops to a level that you have specified.



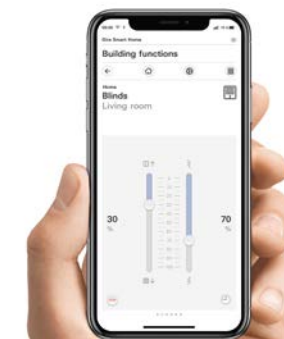
### Security

Decide who may access your system with the simple push of a button using our access and user management. Thanks to data transfer encryption, there's no chance of prying eyes.

The SMART CONNECT KNX Remote Access version 6.1 and higher also supports KNX Secure.

### Not accessible from the Internet?

Is the IP address of your connection not accessible from outside, e.g. a unymedia, an LTE or UMTS connection? No problem. Our solution works here, too. Unpack, connect and you're ready to go.



# Secure remote access from anywhere, whether mobile or landline

Unpack, connect and you're ready to go.

Users and electricians profit from the significant advantages of remote access: Easy set-up and secure remote installation and configuration make work considerably easier and save money when it comes to configuration, maintenance and care.

## + POINTS

- + Robust and simple access from everywhere (ETS, GPA, Homeserver, IP devices, camera)
- + Fast setup – no configuration needed on the router.
- + Also maintain non-KNX systems remotely thanks to the integrated VPN<sup>1</sup>
- + Independent of provider and type of Internet access (LTE, etc.)
- + Security through access control and encryption
- + The smart home uses e-mail, SMS or voice message to send information on events
- + Meet customer wishes quicker, no more appointments or journey times
- + No follow-up costs (excluding SMS services, voice messages)<sup>2</sup>

NEU!

## ACCESS TO KNX SYSTEMS IN JUST 4 STEPS

### 1. Insert and connect device:

Simply place on the top-hat rail and connect the KNX, IP network and power supply.

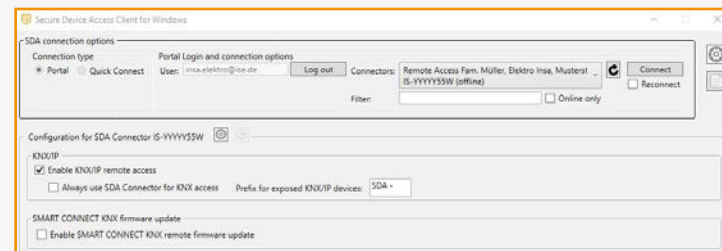


**2. Register the device on the portal:** Register on the portal [www.securedeviceaccess.net](http://www.securedeviceaccess.net) with your user data and register the SMART CONNECT KNX Remote Access with its registration ID (one-time).



### 4. Start the ETS, select interface and you're ready to go:

Start your ETS Professional and select a bus connection. You can now work with the ETS as normal, just as if you were there in person.



### 3. Install and start SDA client software for Windows:

Download the SDA client for Windows from [www.ise.de](http://www.ise.de) and install it on your PC. Start the SDA client software and enter your user data. Select the registered device and open the connection.



Gira X1 App

## FEATURES

- Secure remote maintenance and configuration of KNX installations via ETS5
- Secure remote maintenance and configuration via Gira Project Assistant (GPA)
- Secure remote maintenance and configuration via Gira HomeServer Expert
- Remote maintenance/remote access via VPN
- Secure remote access to web-based visualisations (HTML)
- Secure remote access to visualisations with Gira X1 or Gira HomeServer
- Secure remote access to elements such as cameras, router and printer
- Secure data transfer through encryption
- Firmware 6.1 and higher fully supports KNX Secure (an FDSK is already contained in devices which were supplied with at least firmware 4.0 ex factory)
- Convenient remote diagnostics by saving and retrieving telegram recordings with the data logger
- Time server to send time and date on the bus at configurable intervals
- Easy to use regardless of provider and router (LTE or landline, IPv4)
- Optimised KNX/IP communication for the use of mobile and very slow connections
- Integrated IP interface with up to three tunnel connections (ETS bus or group monitor)
- Access management of users and groups can also be controlled via KNX objects
- Support for 50 notifications (e-mail, SMS<sup>2</sup>, voicemail<sup>2</sup>, IFTTT)
- Notification triggers can be individually configured (filters, conditions, hysteresis)
- Threshold value specification for notifications
- Integrated Ethernet switch with two RJ45 sockets
- 2 GB data volume per month
- Unlimited usage duration and 5 years guaranteed server operation
- Portal server is located in Germany and is subject to the German Data Protection Law
- Extensions via firmware updates

## TECHNICAL DATA

Rated voltage:	DC 24 V bis 30 V
Power consumption:	2 W
IP communication:	Ethernet 10/100 BaseT
KNX communication:	KNX/TP, S-Mode
KNX medium:	TP1-256
microSD card:	up to 32 GB (SDHC)
Connections:	2x RJ45 (integrated switch) Connection and branching terminals for KNX and 24 V
Ambient temperature:	0 °C to +45 °C
Dimensions:	2 HP (DRA plus)

**Note:** Supply via external DC 24 V. microSD card not included. For ETS5 or higher.

UPDATES ENSURE  
THE CONTINUOUS  
IMPROVEMENT  
OF OUR PRODUCTS  
PLEASE CHECK:  
[WWW.ISE.DE](http://WWW.ISE.DE)



### Ordering info:

Item number: 1-0003-004

<sup>1</sup> Possible to choose between Layer 2 (TAP) and Layer 3 (TUN) to use VPN on Windows; <sup>2</sup> Chargeable additional service sms77 or Messagebird.

# HOW IT WORKS

## Communication + Installation

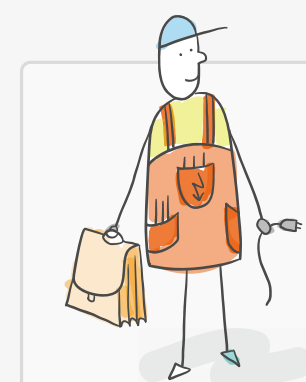
The SMART CONNECT KNX Remote Access is simply connected to the home network. It then connects to the portal server ([www.secureddeviceaccess.net](http://www.secureddeviceaccess.net)) automatically through your existing Internet connection. Communication between the Remote Access and the portal server is encrypted and secured with digital certificates.

With a connection to the home network, you can now access almost all of your network devices using the Internet. Depending on the network protocols supported by the respective device, access occurs directly through the SDA portal server or through the "SDA client" software available for windows platforms.

As the SMART CONNECT KNX Remote Access version 6.1 and higher also works as a VPN server, you can now also easily perform many maintenance tasks remotely, which you could not realise with the Remote Access previously. You can use the KNX connection to connect the Remote Access with the

KNX installation in your home. This enables you, or your electrical installer, to access your KNX devices from anywhere, e.g. with the ETS. Don't worry, though. The portal server is located in Germany and is subject to the German Data Protection Law.

**Electrical installer**  
Remote maintenance, remote diagnostics and configuration



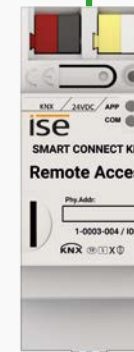
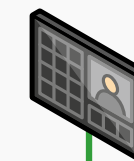
office

**SDA portal server**  
[www.secureddeviceaccess.net](http://www.secureddeviceaccess.net)



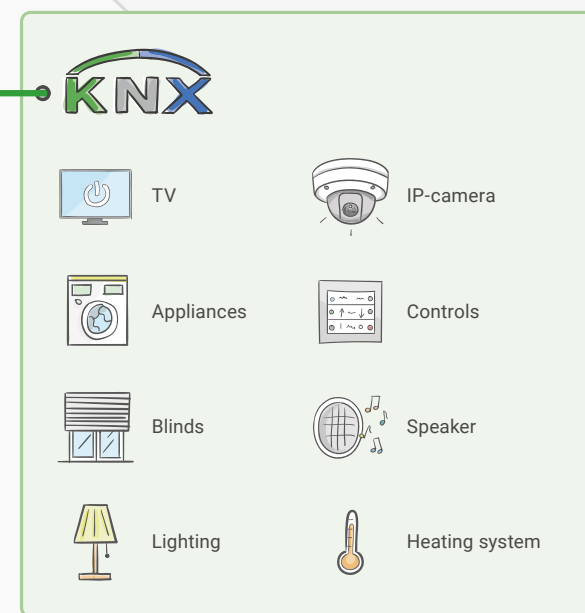
internet

**Visualisation**



**Router**  
home network

at home



**Residents**

Remote access on visualisation and control e.g. with the Gira Smart Home App



anywhere

encrypted internet connection  
 KNX/TP-connection



# FULL CHARGE AHEAD

## SMART CONNECT KNX e-charge II

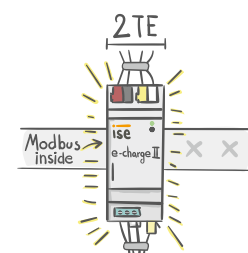
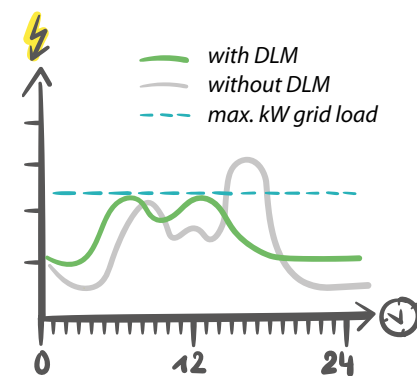
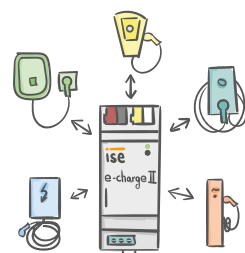
Electromobility in KNX Smart Home is possible with dynamic load management and SMART CONNECT KNX e-charge II.

FIND INFO ON THE  
PREDECESSOR  
E-CHARGE HERE  
ISE.DE/E-CHARGE

### Dynamic load management (DLM)

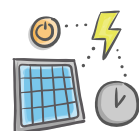
Casserole in the oven? Laundry in the dryer? And charge the car at the same time? It's all possible thanks to dynamic load management (DLM)! Despite high power-consuming appliances, charging is now also possible even with small household connections. The available electricity is evenly distributed to all charging points, preventing the household connection from becoming overloaded.

The ability to coordinate up to five charging points from different manufacturers per gateway and to prioritise one specific charging point is also guaranteed to impress in the business world.



### Different manufacturers and mixed operation

Would you like to use charging points from different manufacturers? Up to five charging points from different manufacturers can be integrated in mixed operation. This offers maximum flexibility in terms of different brands and models.



### Ecological, economical or individual charging

Control charging via KNX! Use advantageous electricity pricing and electricity generated by your renewable energy source to charge your vehicle when it is convenient for you. Or individually by pressing a button.



### Informed charging

You want to know if and how many cars are connected or being charged at your charging stations, but you don't want to go to your garage? Be informed comfortably via KNX – where you want to and the way you want to!



### Configuration completely via the ETS

The gateway enables the comprehensive integration of charging points in your KNX system – fully configurable in the ETS. No additional software is required and all data is clearly arranged in one system.

### Modbus inside with just two HPs in the control cabinet

SMART CONNECT KNX e-charge II unites the required connections in one gateway! Thanks to the integrated Modbus RTU/ASCII connection, there is no need for an additional USB adapter. This saves space in the control cabinet, since only two HPs are required.



e-charge II

## + POINTS

- + Dynamic load management (DLM)
- + Support for 5 charging points
- + Different manufacturers and mixed operation
- + Connection via IP or RS485 (Modbus)
- + Configuration via ETS
- + 2 HPs in control cabinet without additional adapter

FIND SUPPORTED  
CHARGING  
POINTS ONLINE:



## FEATURES

- Grid-supporting control
- Integrated RS485 adapter
- Prioritisation of one charging point
- Charging status values: Charging point status (status), Connected (status), Charging (status), Charging complete (status)\*, Interrupt (set/status)\*, Start/Stop (set/status)\*, Unlock (set)\*
- Charging current status values: Target (status/set), Actual L1 - L3\*, Actual (status)
- Power status values: Actual L1 - L3\*, Actual (status)
- Energy status values: Actual L1 - L3, Actual (status)\*
- Energy consumption status values: Last charge (status), Total (status)\*
- Fault status values: Fault, Last fault
- Status values: Communication ID (EVCCID) (status)\*, Charging point internal temperature (status)\*, Temperature warning\*, RFID tag (status)\*, Serial number\*, Charging point firmware version\*
- KNX Secure
- Extensions via firmware updates

\* Manufacturer-dependent

## TECHNICAL DATA

Rated voltage:	DC 24 V bis 30 V
Power consumption:	2,3 W
IP communication:	Ethernet 10/100 BaseT
KNX communication:	KNX/TP, S-Mode
KNX medium:	TP1-256
microSD card:	up to 32 GB (SDHC)
Connections:	2x RJ45 (integrated switch) Connection and branching terminals for KNX and 24 V RS485: Screw terminal, 3-pin (GND, A+, B-)
Ambient temperature:	0 °C to +45 °C
Dimensions:	2 HP (DRA plus)

**Note:** Supply via external DC 24 V. microSD card not included.  
For ETS 5.7.5 or higher.



**Ordering info:**  
Item number: 1-000F-003

# HOW IT WORKS

## Communication + Installation

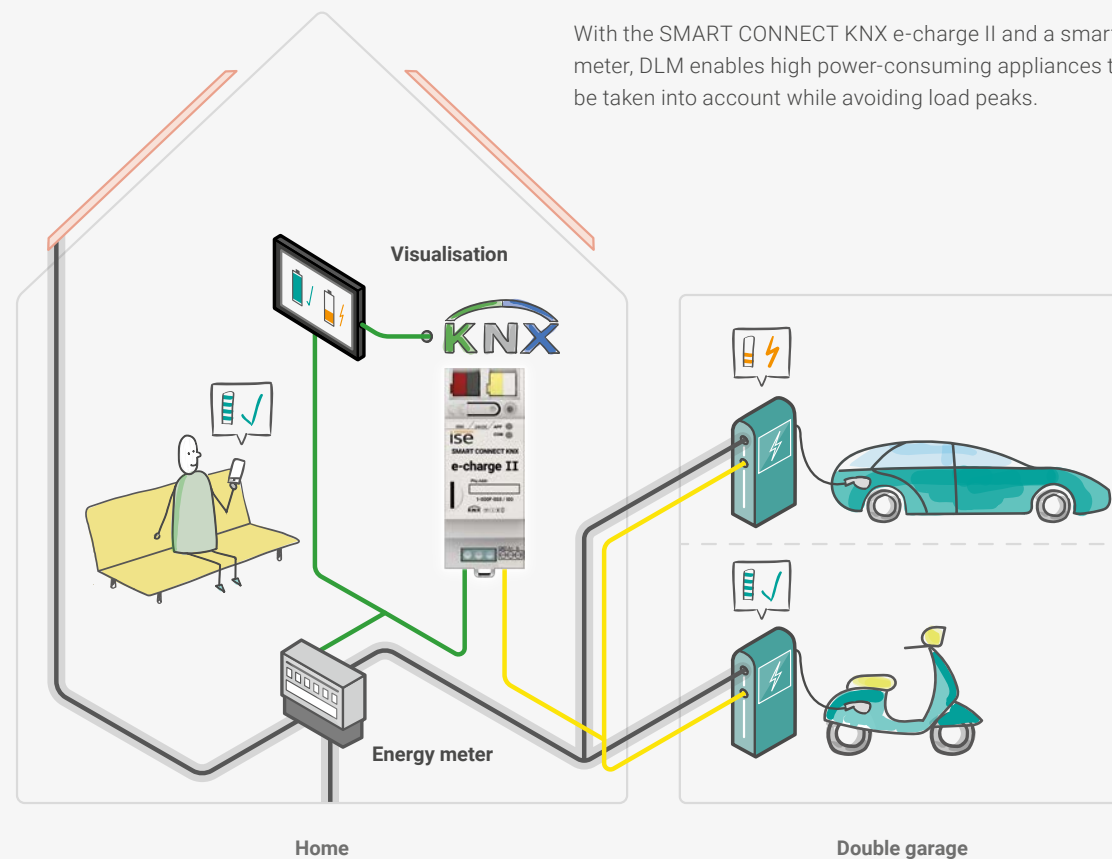
e-charge II

### The use at home with a regular house connection.

Energy consumption often presents a problem. A mains connection that is too small and several energy-consuming appliances in the household at once lead to long charging times with a low charging current. The energy supplier has to install a stronger supply line, which comes with high investment costs.

With the SMART CONNECT KNX e-charge II and the use of DLM smart home technology, charging is now possible even with small household connections. The available electricity is evenly distributed to all charging points, preventing the household connection from becoming overloaded.

With the SMART CONNECT KNX e-charge II and a smart meter, DLM enables high power-consuming appliances to be taken into account while avoiding load peaks.



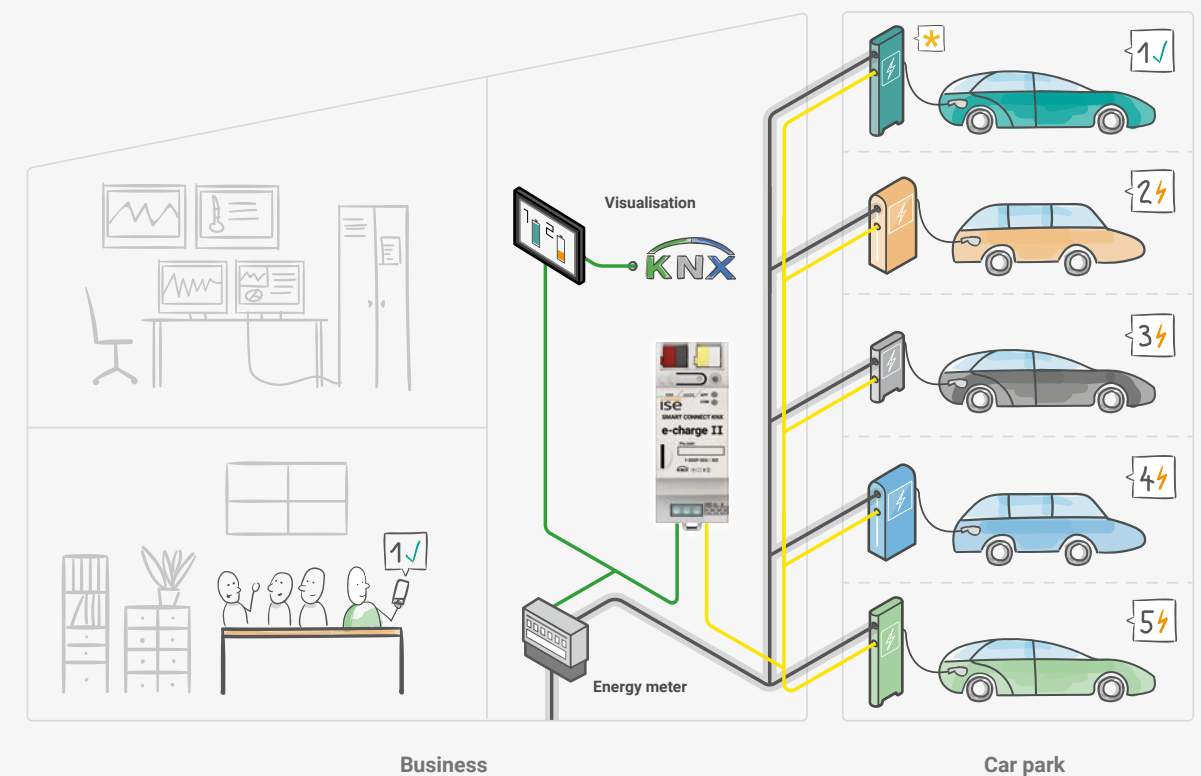
- Solar system
- KNX/TP connection
- Energy supply
- Charging point connection (IP/RS485)



### The use in hotels or businesses with many charging points.

In companies or hotels, several charging points need to be operated at once. The SMART CONNECT KNX e-charge II allows up to five charging points per gateway.

With the SMART CONNECT KNX e-charge II and a smart meter, DLM enables high power-consuming appliances to be taken into account while avoiding load peaks. The prioritisation of one charging point offers additional benefits for a wide range of use cases.



- KNX/TP connection
- Energy supply
- Charging point connection (IP/RS485)
- Prioritisation

e-charge II

# CAN YOU HEAR IT?

## SONOS IS ROCKING OUT WITH KNX

### SMART CONNECT KNX Sonos

SONOS

#### A smart start to your day

Is the light in your bathroom already switched on by a presence detector? Why not switch on your favourite radio station automatically at the same time? Perhaps you'd like to listen to the news in the morning, the latest charts during the day and then something calming in the evening.\*



#### Are you still calling out, "Kids, lunch is ready"?

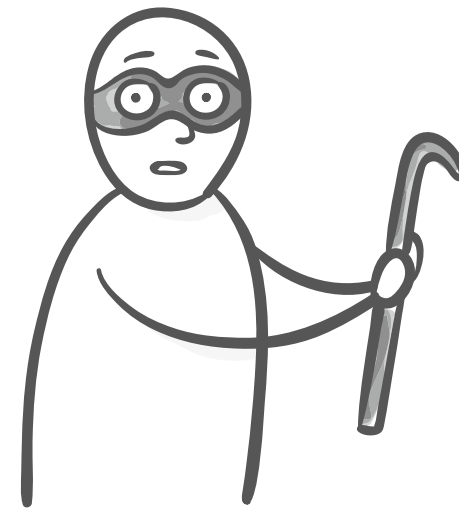
Save your vocal cords, and your nerves. Simply start the lunch call on your selected players with the push of a button, even if they're already playing something else or are muted. Your family will be conveniently notified, and nothing else will stand in the way of lunch together.



#### A doorbell over Sonos?

Why just use the standard door bell when you can have the doorbell played on all Sonos players while pausing music playback. Visitors will never go unheard again.

\*Additional logic required.



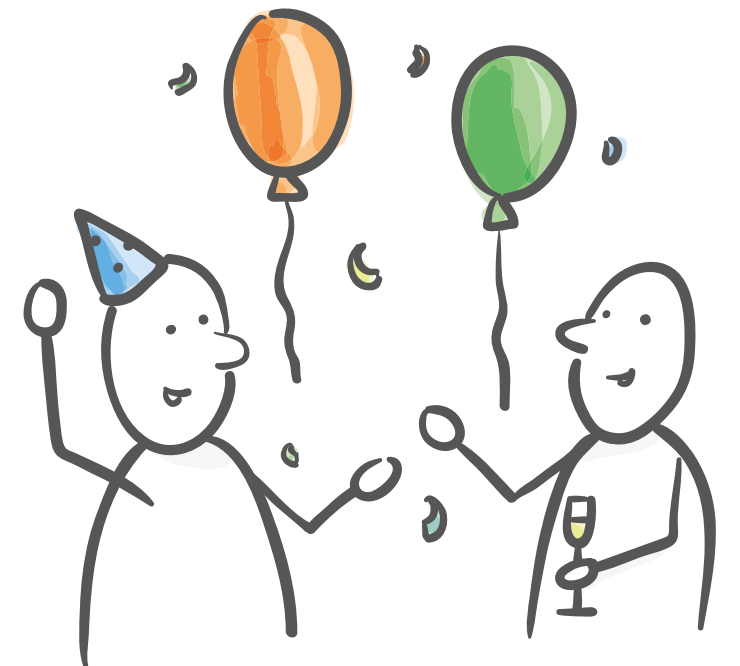
#### Deterring intruders

Use your Sonos system to simulate presence, e.g. using a KNX motion detector. What thief is going to break in if they hear voices or loud dog barking?

SONOS

#### Get the party started

Up to ten Sonos master devices each with one master and up to five slaves can easily be controlled via KNX. Optionally, each room can be operated separately or, using party mode, the entire house simultaneously.



Sonos Play1 and Connect:Amp



# Up to ten Sonos master devices and 50 slaves can easily be controlled via KNX

Optionally, each room can be operated separately or, using party mode, the entire house simultaneously.

Crystal-clear hi-fi sound and virtually unlimited sound scenarios: The Sonos sound system gives digital music a diverse landscape made up of different wireless loudspeakers and audio systems. This acoustic marvel had just one catch up until now: It had to be operated using a special app, especially when used with zones. A chore for every KNX user.

Now, the SMART CONNECT KNX Sonos is opening up the world of KNX to this popular family of sound and making it even easier to use. Up to ten Sonos master devices can be connected via IP with dynamic zone creation. Each of these master devices, in turn, can be networked with up to five slave devices. Here, either a separate music program is assigned to each master device or a master device operates the entire device landscape.

## + POINTS

- + Separately control music playback in up to 10 rooms
- + Trigger dynamic grouping of loudspeakers via KNX
- + Interrupt playback or unmute for announcements like bell, lunch call or wake-up alarm
- + Simple integration into the KNX with ETS
- + Announcements and playlists directly from the device (microSD card)



Sonos Play1

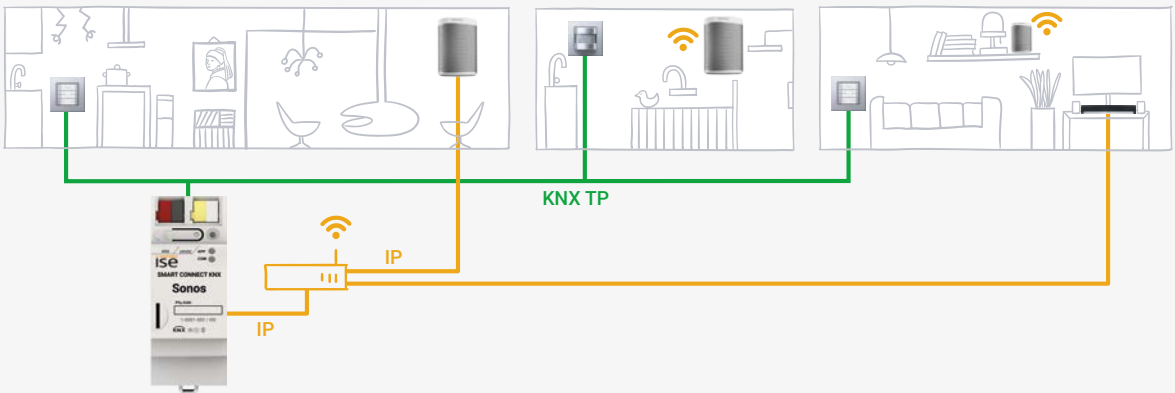
## FEATURES

- Dynamic group creation for up to 10 groups, each with one master and up to five slave devices
- Control of playlist start, pause, mute and stop for each group
- Playlist (forward/back)
- Title (forward/back)
- Random playback of titles
- Complete volume control of masters, slaves and the entire group
- Title, artist and album in scrolling text on KNX text objects
- Direct selection of the starting title of playlists
- Volume pre-selection and unmuting during source selection
- Patching in of announcements (temporary interruption of the current playback)
- Play music from the microSD card
- Support for analogue and optical inputs of the Sonos Playbar and Sonos Connect/Connect:Amp
- Simple integration in KNX (can be completely configured via ETS)
- Random playback of titles in playlists
- Random starting point in playlists
- Repeat of playlists
- Extensions via firmware updates

## HOW IT WORKS

### Communication + Installation

The SMART CONNECT KNX Sonos is simply connected to your KNX installation and the home network on which your Sonos system is also located. Use the ETS to make configurations, create and set up playlists and Bob's your uncle. You're ready to go.



## TECHNICAL DATA

Rated voltage:	DC 24 V to 30 V
Power consumption	2 W
IP communication:	Ethernet 10/100 BaseT
KNX communication:	KNX/TP, S-Mode
KNX medium:	TP1-256
microSD card:	up to 32 GB (SDHC)
Connections:	2x RJ45 (integrated switch) Connection and branching terminals for KNX and 24 V
Ambient temperature:	0 °C to +45 °C
Dimensions:	2 HP (DRA plus)

**Note:** Supply via external DC 24 V. microSD card not included. For ETS5 or higher.

UPDATES ENSURE  
THE CONTINUOUS  
IMPROVEMENT  
OF OUR PRODUCTS  
PLEASE CHECK:  
[WWW.ISE.DE](http://WWW.ISE.DE)



**Ordering info:**  
Item number: 1-0001-002

# LIGHT ON, DIMMED OR BRIGHT – NO APP REQUIRED

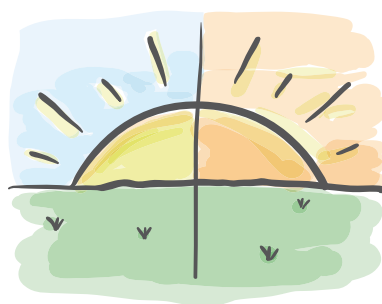
## SMART CONNECT KNX Hue

Philips Hue White and Color Ambiance Starterset (E27)

hue

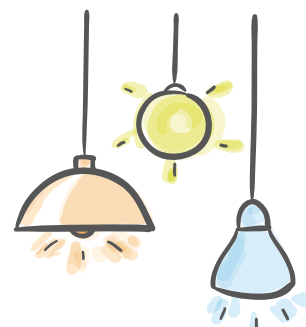
### Using and dimming portable lights

Take advantage of the opportunity to integrate portable lights into your KNX system straight away – even dimming them (unlike with other lighting controls). You can wake up to a simulated sunrise in the morning, for example.



### Bedtime and wakeup scenarios

To help children fall asleep more easily, for example, brightness can be reduced in intervals. In the morning, a simulated sunrise ensures natural awakening.



### Signalling events

Someone is pressing the doorbell button, the washing machine is finished or a call signal is being initiated. Use Philips Hue lights together with KNX to signal events. You can make the lights flash green when someone presses the doorbell button, for example, so that sleeping children are not awoken by a ringing doorbell.

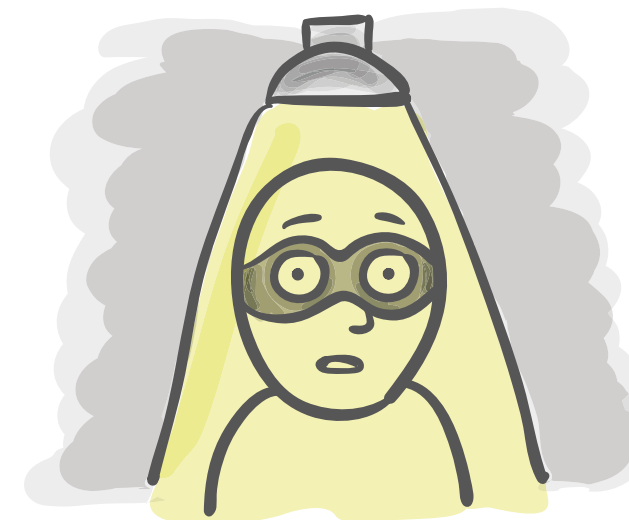
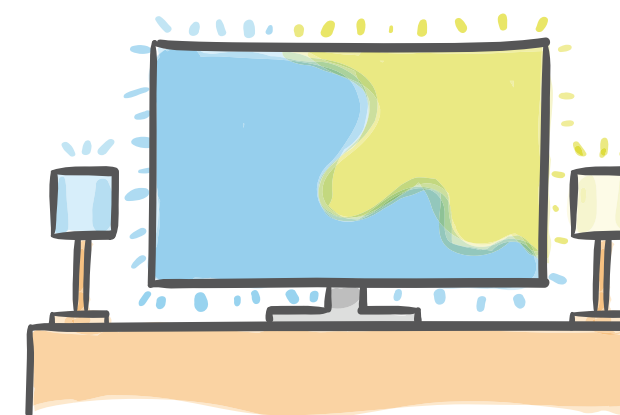


Philips Hue Iris



### Ambilight TV, Philips Hue and KNX

If you have a Philips television with the Ambilight function, Philips Hue makes your viewing experience even more intense, colourful and captivating. The same lights can also be operated via KNX on an as-needed basis.



### Use light against intruders

The Philips Hue system can be easily integrated into the occupied-home simulation via KNX. This "puts a spotlight" on uninvited guests, too.

hue

# The Philips Hue lighting system can now also be operated via KNX

Colour value, temperature and brightness can be defined for every light, making each completely customisable.

hue

Recreate the summer mood captured with your smartphone at the seaside at home. Program your own sunrise. Set the right scene at your house party. Using the Hue wireless illumination system from Philips, you can customise lighting and thereby increase the quality of your life. It used to be an impediment for all KNX users – a lack of perfect integration into the KNX system.

Now, the SMART CONNECT KNX Hue provides a solution for this. Thanks to the innovative KNX adapter, up to 25 Hue lights can be controlled by each dimmer or switch via KNX. The LED technology in the light sources opens up a broad spectrum of light tones, from warm to vibrant. Individualized RGB values can be specified for each individual light. You can conveniently choose between entire light scenarios or separate operation using the KNX operating element.

## + POINTS

- + Control portable lighting like bedside lamps and floor lamps
- + Execute scenes from the Philips Hue System via KNX
- + Trigger visual notifications through signal flashing from Philips Hue scenes via KNX
- + Control up to 5 Philips Hue Bridges with one single device
- + Compatibility with common Color Pickers (Gira, Elsner, Jung)



Philips Hue Bridge

## FEATURES

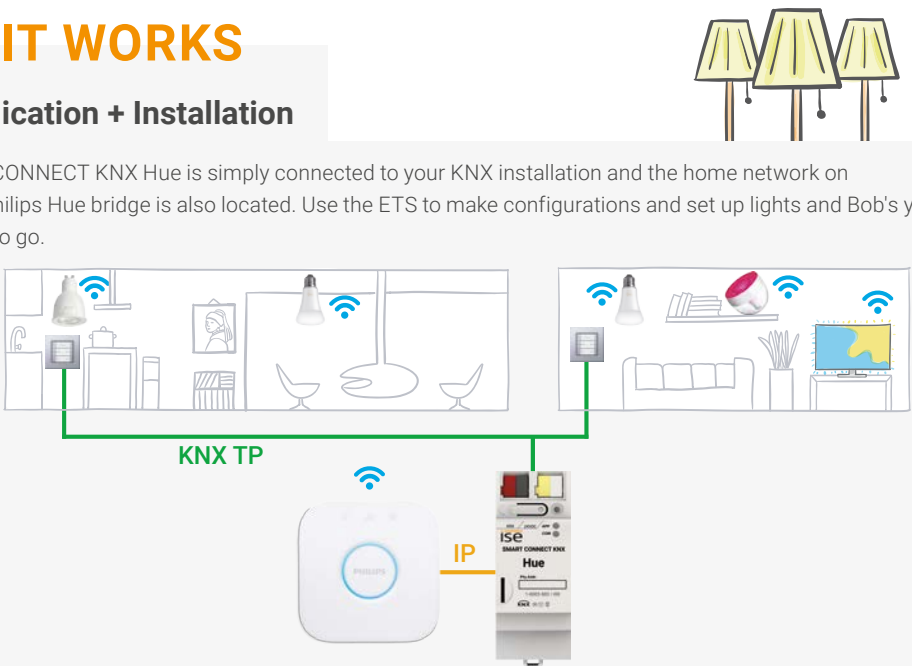
- Separate control of up to 25 Philips Hue lights
- Support of up to five Philips Hue Bridges per device
- Switching and dimming
- Individual control of RGB colour values
- Individual control of the colour temperature
- Configuration of switch-on brightness per lamp via ETS or device website
- Configuration of dimming behaviour per lamp via ETS or device website
- Colour conversion for compatibility with common Color Pickers (Gira, Elsner, Jung)
- Calling up Philips Hue scenes
- Signal flashing of Philips Hue scenes (specific duration, return to original state)
- Alert flash per lamp
- Colour gradient function per lamp
- Connection status of Bridge or lamps on KNX
- ETS product database entry with channel structure
- Simple integration into KNX (can be completely configured via ETS)
- Extensions via firmware updates

hue

## HOW IT WORKS

### Communication + Installation

The SMART CONNECT KNX Hue is simply connected to your KNX installation and the home network on which your Philips Hue bridge is also located. Use the ETS to make configurations and set up lights and Bob's your uncle. You're ready to go.



## TECHNICAL DATA

- |                      |  |
|----------------------|--|
| Rated voltage:       | DC 24 V to 30 V  |
| Power consumption:   | 2 W  |
| IP communication:    | Ethernet 10/100 BaseT  |
| KNX communication:   | KNX/TP, S-Mode   |
| KNX medium:          | TP1-256  |
| microSD card:        | up to 32 GB (SDHC)   |
| Connections:         | 2x RJ45 (integrated switch)<br>Connection and branching terminals for KNX and 24 V |
| Ambient temperature: | 0 °C to +45 °C   |
| Dimensions:          | 2 HP (DRA plus)  |
- Note:** Supply via external DC 24 V. microSD card not included. For ETS5 or higher.

UPDATES ENSURE  
THE CONTINUOUS  
IMPROVEMENT  
OF OUR PRODUCTS  
PLEASE CHECK:  
[WWW.ISE.DE](http://WWW.ISE.DE)



**Ordering info:**  
Item number: 1-0002-003

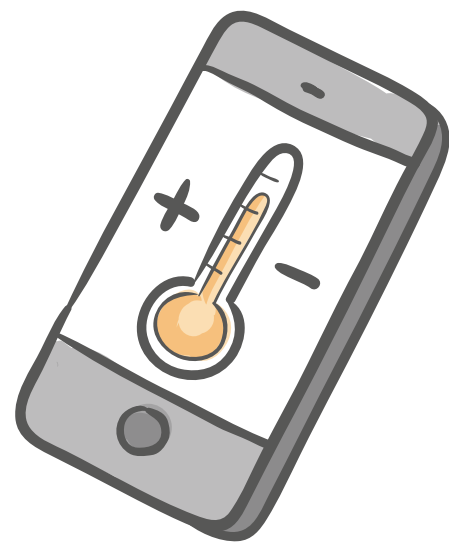
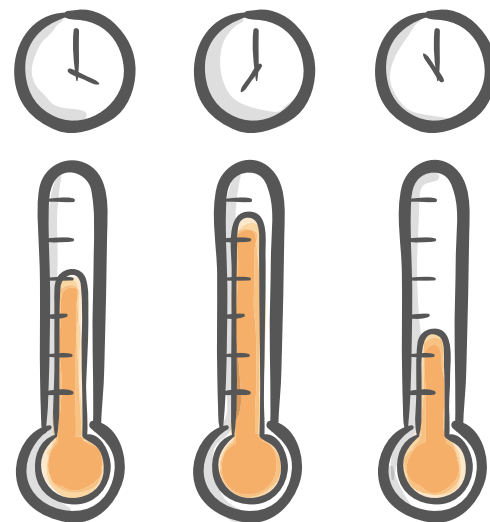


# COSY WARM AND EFFICIENT – VAILLANT SNUGGLES UP WITH KNX

## SMART CONNECT KNX Vaillant

### Controlling heat as needed

Effective immediately, times and setpoint values for heating and hot water can be easily and quickly entered into the visualisation or any other operating device. This saves energy, as the system only works when it's needed.

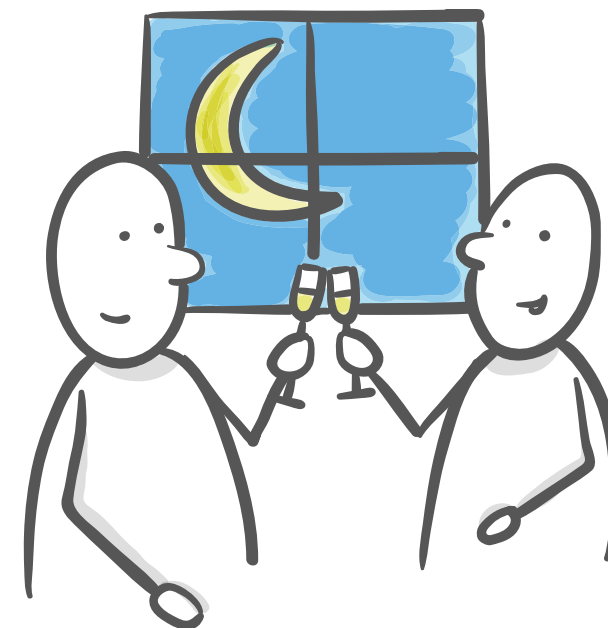
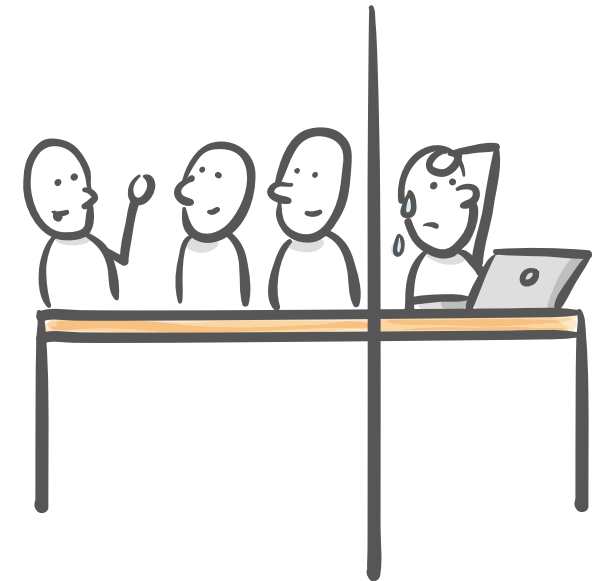


### Informed in detail

Conveniently obtain key information directly from your heating system. Whether you are on the sofa or looking at the panel, you can read important data such as the hot water temperature, the circulation pump status or the minimum setpoint flow temperature for cooling mode quickly and clearly on your KNX visualisation display.

### Automatic ventilation

The ventilation system is started automatically after a meeting, e.g. after the last person has left the room. In this way, the following meeting can begin in a pleasant climate.



### A mode for long evenings

The night mode of the heating system can, for example, easily be set to a later point in time with the push of a button for the well being of guests at a later hour as well.



Vaillant sensoCOMFORT (above) Vaillant MultiMatic (below) and Vaillant ecoTEC exclusive

# Convenient integration of Vaillant heating systems into the KNX system

Together with the system controllers **sensoCOMFORT** or **multiMATIC**, the **SMART CONNECT KNX Vaillant** offers integration between **eBUS** and **KNX**.

With the SMART CONNECT KNX Vaillant, you can now also switch your heating system to "standby mode." This allows you to reduce the room temperature setpoint values in all rooms (if desired) and minimise heating.

Do you wish to be able to react to short-term changes in use quickly and easily (longer than usual periods of absence, visits by friends, parties etc.)?

With the SMART CONNECT KNX Vaillant, the times and setpoint values for heating and hot water can be changed temporarily or you can adjust ventilation control (especially through ventilation boosting) to your current requirements.

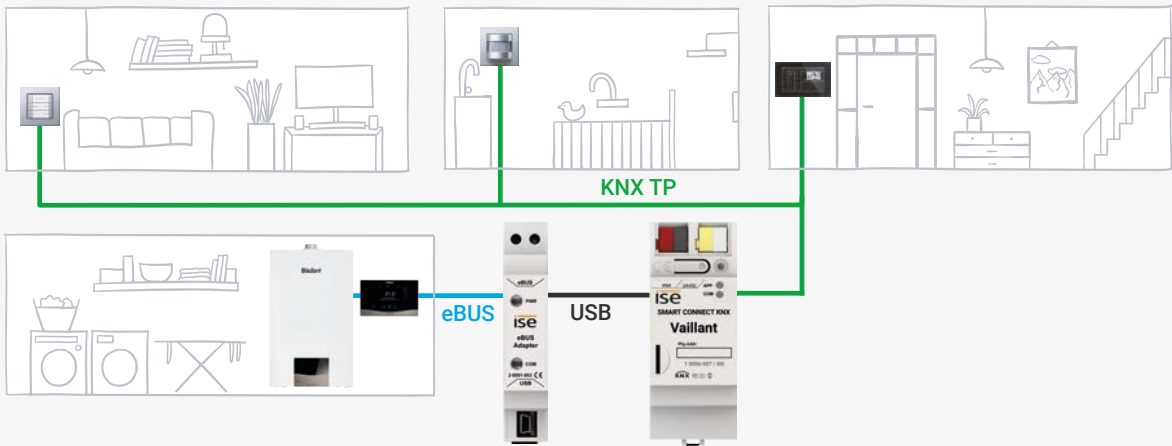
## + POINTS

- + Save energy during longer absences
- + Integration of heating and ventilation in usage scenarios
- + Display of temperature and error status for up to eight heat generators
- + An overview of consumption and yield values
- + Integration into visualisations, e.g. Gira HomeServer
- + Recommended by Vaillant
- + Additional communication objects provide a great deal of key information
- + New functions can be used with both the **sensoCOMFORT** and **multiMATIC** controllers.

## HOW IT WORKS

### Communication + Installation

The SMART CONNECT KNX Vaillant is simply connected to the eBUS of your KNX installation. Use the ETS to make configurations, carry out set up and Bob's your uncle.



Vaillant sensoCOMFORT

## FEATURES

- Control of operation mode and temperature setpoint values for up to three heating zones
- Control of operation mode and temperature setpoint value for hot water supply
- Control of ventilation system operation mode
- System information like service mode, error messages, date and time, outside temperature and system status
- Heating circuit status values: Pump status, flow setpoint temperature, flow temperature, minimum flow setpoint temperature for cooling mode, heating curve for each heating circuit
- Hot water status values: Circulation pump status, charging pump/3-way valve status, hot water temperature
- Display of temperature and error status for up to eight heat generators
- Yield values of solar systems and heatpumps
- Consumption values for hot water supply and heating (electricity and gas)
- Handover protocol from installer to system integrator
- Simple integration into KNX (can be completely configured via ETS)
- Easy-to-understand structure in the ETS5 thanks to channels
- Extensions via firmware updates

## TECHNICAL DATA

### Gateway

Rated voltage:	DC 24 V to 30 V
Power consumption:	1,2 W
IP communication:	Ethernet 10/100 BaseT
KNX communication:	KNX/TP, S-Mode
KNX medium:	TP1-256
Connections:	1x RJ45 1x USB Connection and branching terminals for KNX and 24 V
Ambient temperature:	0 °C to +45 °C
Dimensions:	2 HP (DRA plus)

### eBUS Adapter

Rated voltage:	Supply via eBUS and USB Power
Power consumption:	0,1 W
Connections:	Mini USB B eBUS via 2-pole screw terminal
Ambient temperature:	0 °C to +45 °C
Dimensions:	1 TE (REG)

**Note:** Supply via external DC 24 V. Set consists of eBUS adapter and gateway. Only for systems with the heating controller multiMATIC. For ETS5 or higher.

UPDATES ENSURE  
THE CONTINUOUS  
IMPROVEMENT  
OF OUR PRODUCTS  
PLEASE CHECK:  
[WWW.ISE.DE](http://WWW.ISE.DE)




**Ordering info:**  
Item number: S-0001-006


# INNOVATIVE SINGLE-ROOM CONTROL – NOW, VIEGA AND KNX TAKE CARE OF THINGS TOGETHER

## SMART CONNECT KNX viega

The SMART CONNECT KNX viega integrates the innovative Fonterra Smart Control single-room control by viega into the KNX system.\* Up to five base stations can be controlled with the SMART CONNECT KNX viega. Up to 8 room temperature controllers and 12 outlets can be connected to each of these base stations.

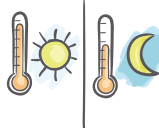
For more information on the Fonterra Smart Control, please see [www.viega.de](http://www.viega.de).






### Intelligent energy saving

During longer periods of absence, such as holidays or business trips, you can simply set the system into absence mode. You can also define your scheduled return time. The system will make sure that the heating is on at the right time, whilst saving considerable energy during the remaining period.



### A comfortable temperature at just the right time

Cosy warmth in the bathroom in the morning, soothing coolness in the bedroom at night. The Fonterra Smart Control will take care of the rest.



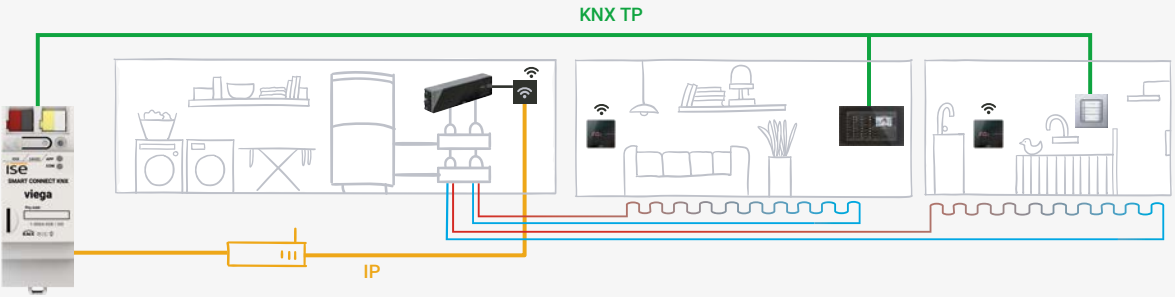
### While you're away

With remote access, such as the SMART CONNECT KNX Remote Access and a KNX visualisation, you can easily adjust the temperature to suit your individual requirements even when you're not at home.

## HOW IT WORKS

### Communication + Installation

The SMART CONNECT KNX viega is simply connected to your KNX installation and the home network on which your Fonterra Smart Control base station with WLAN module is also located.



Fonterra Smart Control Base Unit

## + POINTS

- + Saving energy during longer absences
- + Integration of panel heating into usage scenarios
- + Integration into visualisations, e.g. Gira HomeServer, Gira X1
- + Absence mode and scheduled return can be configured
- + Hydraulic balancing takes place automatically and permanently



Fonterra Smart Control Room Thermostat



## FEATURES

- Support of 5 base stations each with up to 8 room temperature controllers and 12 outlets
- Room temperature control
- Switching between heating and cooling mode
- Power level control
- Absence control
- System information such as error messages or updates from viega
- Simple integration in KNX (can be completely configured via ETS)
- Extensions via firmware updates

## TECHNICAL DATA

Rated voltage:	DC 24 V to 30 V
Power consumption:	2 W
IP communication:	Ethernet 10/100 BaseT
KNX communication:	KNX/TP, S-Mode
KNX medium:	TP1-256
Connections:	2x RJ45 (integrated switch) Connection and branching terminals for KNX and 24 V
Ambient temperature:	0 °C to +45 °C
Dimensions:	2 HP (DRA plus)
<b>Note:</b> Supply via external DC 24 V. For ETS5 or higher.	

UPDATES ENSURE  
THE CONTINUOUS  
IMPROVEMENT  
OF OUR PRODUCTS  
PLEASE CHECK:  
[WWW.ISE.DE](http://WWW.ISE.DE)



**Ordering info:**  
Item number: 1-000A-008

\* If you wish to use the SMART CONNECT KNX VIEGA, you must use Fonterra Smart Control for Fonterra surface temperature regulating systems in Version 3 or higher with firmware version 2.8-4.43 or higher, supplied by Viega GmbH & Co. KG.



# SMART HOME ENTERTAINMENT WITH PANASONIC AND KNX

## SMART CONNECT KNX Panasonic

With the SMART CONNECT KNX Panasonic gateway, up to four televisions can be integrated into KNX and used as an important element of your Smart Home. Be inspired by new and versatile possibilities!



### Comfortable awakening

A smart day begins. Raising blinds slowly let in daylight. Your Panasonic TV device welcomes you with your favorite news channel.



### The doorbell rings

Looking at your TV and find out whether guests are already at the door. Sitting on the couch you can comfortably see the image of the outdoor camera on TV screen.



### Leaving the house

You leave your house well informed. Not only your lights are switched off - your Panasonic TV devices go to standby or it becomes part of an occupied-home simulation.



### Save standby costs

How to save energy? After a defined time in standby, the power outlet of your Panasonic TV device is turned off. It is turned on again by a TV scene or a motion detector.



### Your notifications on the TV

Your smart washer has finished? Movement in the garden? Display self-defined message texts on your TV. Comfortable and individual.



### A cinematic experience after work

Your day was busy – it's time to enjoy your evening! Your individual cinematic experience starts turning on your Panasonic TV. Blinds darken the room, light and sound creates the fitting mood. Only popcorn and friends give you a greater cinematic experience.

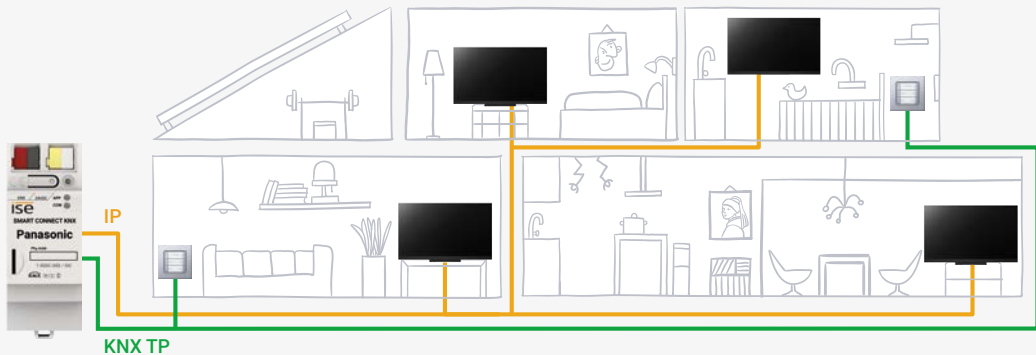
+ POINTS

- + Display IP camera pictures on screen
- + Display self-defined message texts
- + KNX certified
- + Complete configuration via ETS

## HOW IT WORKS

### Communication + Installation

The SMART CONNECT KNX Panasonic is simply connected to your KNX installation and the home network on which your Panasonic TV device is also located. Simply configure the gateway via the ETS and you're good to go.



Panasonic-TV

## FEATURES

- Separate control of up to four televisions
- Television on/off
- Wake on LAN power on support
- Volume control (switch the sound on and off, mute the TV device, increase/lower the volume, in stages or directly, to absolute or relative value)
- Program control (change to the next or the previous program channel, change to a particular program channel)
- Transfer camera images, e.g. from an external camera
- Bookmark up to ten links
- Display predefined text (use up to ten self-defined texts or dynamically display texts from other devices on the TV device, e.g. "Movement detected in garden" from an outside camera), display message as text
- Source selection (flexibility of choice between the sources of the TV device, e.g. switch conveniently between HDMI input and receivers)
- Statusreport via KNX (current channel, current source, current volume, mute status, operating status, current errors)
- Simple integration in KNX (can be completely configured via ETS)
- Extensions via firmware updates

## TECHNICAL DATA

Rated voltage:	DC 24 V to 30 V
Power consumption:	2 W
IP Communication:	Ethernet 10/100 BaseT
KNX communication:	KNX/TP, S-Mode
KNX medium:	TP1-256
Connections:	2x RJ45 (integrated switch) Connection and branching terminals for KNX and 24 V
Ambient temperature:	0 °C to +45 °C
Dimensions:	2 HP (DRA plus)

**Note:** Supply via external DC 24 V. Supports 2019 Panasonic 4K HDR TVs from GXW804-series onward. For ETS5 or higher.

UPDATES ENSURE  
THE CONTINUOUS  
IMPROVEMENT  
OF OUR PRODUCTS  
PLEASE CHECK:  
[WWW.ISE.DE](http://WWW.ISE.DE)



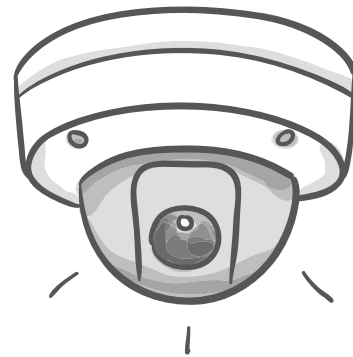
**Ordering info:**  
Item number: 1-000C-000

# KNX NOW HAS EYES

## SMART APP KNX Axis

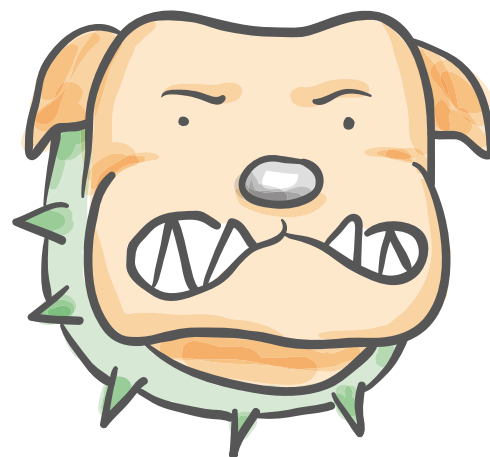
### Reliable motion detection via KNX

Who needs umpteen camera recordings of trees moving in the wind or moths flitting around the light? In future, use your KNX motion detector to start recordings and record only those things which are important.



### Enjoy your privacy

If you'd like to enjoy the garden, deactivate motion detection and/or activate the private zone masks of your surveillance camera, e.g. with a KNX door contact on your terrace door. Bothersome switching off of the PoE power supply is no longer necessary.



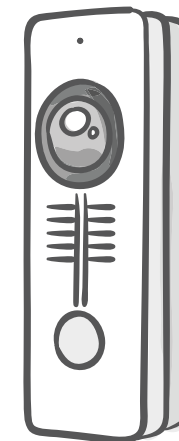
### The camera produces the deterrent

If unauthorised persons tamper with your house, the camera registers this movement and not only starts recording, but also switches on the lighting and television via KNX and begins playing announcements (dog barking, voices etc.), e.g. using the Sonos sound system. There are no limits to your imagination. Discover deterrents on a whole new level.



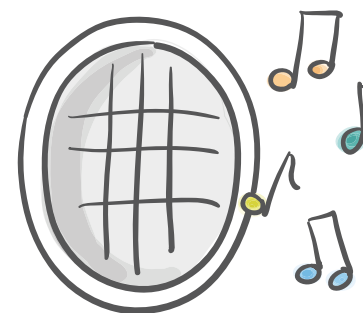
### Outwitting made difficult

Someone sabotages your camera by covering it or spraying it with paint. As soon as this happens, an alarm is triggered and you are notified. This enables you to actively intervene in the event as it unfolds, not after the saboteur has finished the job.



### Door station with KNX

Don't just integrate network-only cameras into the KNX – include your door stations from Axis Communications as well. Use the call button to play a ring tone using the KNX and Sonos sound system, for example.



### Loudspeaker with KNX

Your loudspeakers from Axis Communications can be integrated into your KNX system as well, thus enabling the control of loudspeaker playback in your shop over KNX, for example.



AXIS Q37 Network Camera Series

AXIS P1364 Network Camera Series

# Building automation and security technology combined

The world's first KNX connection (plug-in) for networking products from the Axis Communications company.

Combine the world of building automation (KNX) with the security technology of the Axis Communications company. Utilise the strengths of both worlds and integrate network cameras, door stations and network loudspeakers into the KNX – with no additional hardware. Simply install our plug-in onto the Axis IP product, configure it and Bob's your uncle.

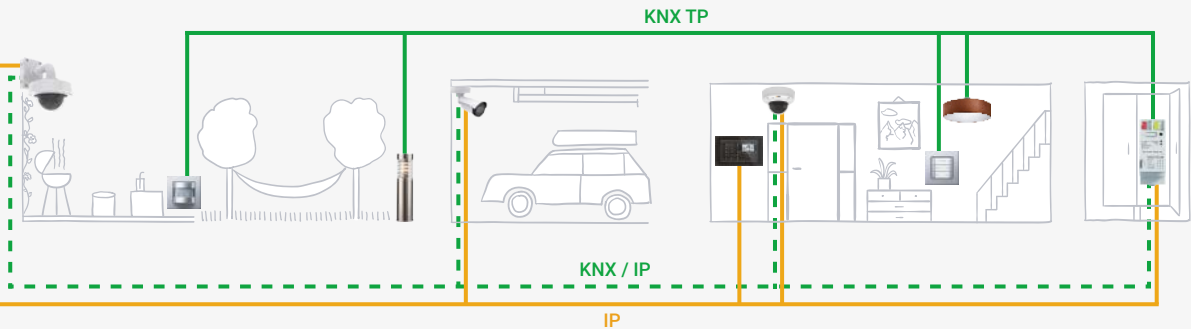
## + POINTS

- + Perfect integration of Axis network devices into application scenarios
- + Stronger combination of both systems. Motion detector (KNX) starts the action or Cross Line Detection (camera) switches on the light
- + Private sphere (masking) can be controlled via KNX, for instance, through presence and absence
- + Camera responds directly to KNX/IP after successful installation
- + Third-party applications on the camera can also communicate with KNX
- + In addition to network cameras, all Axis network devices with ACAP are also supported

## HOW IT WORKS

### Communication + Installation

The SMART APP KNX Axis plug-in is installed directly on a network device (e.g. network camera) based on an Axis ACAP (AXIS Camera Application Platform). After successful installation, the Axis network device is a KNX/IP device and communicates with the world of KNX via KNX/IP routing. The plug-in is configured on the network device (event system) and in the ETS. KNX installations are usually implemented with two wires (TP), meaning that a KNX/IP router has to be present in this installation (often already present in KNX visualisation systems) to enable communication between KNX/IP and KNX/TP.



AXIS Dome Q37



## FEATURES

- Support of Axis network cameras
- Support of Axis WLAN cameras\*
- Support of Axis D2050 -VE Network Radar Detector
- Support of Axis door stations
- Support of Axis network loudspeakers
- 30 communication objects for sending from KNX to the Axis camera (1 bit)
- 30 communication objects for sending from the Axis camera to KNX (variable bit length)
- Control of actions on the camera
- Triggering of image, video and/or camera message sending
- With PTZ cameras, predefined positions can be focused on
- Camera settings (properties) can be read out and sent to the KNX
- Sending of a message to the KNX with access to the camera's live stream
- Monitoring of the camera itself, e.g. for overheating or breaking of the connection to the saving location for videos
- Third-party applications can send values to the KNX
- Simple integration into KNX (can be completely configured via ETS and the camera's event system)



AXIS D2050-VE Network Radar Detector

## TECHNICAL DATA

KNX communication: KNX/IP (Routing), S-Mode

**Note:** The plug-in can only be used on network devices from Axis Communications with ACAP support. For ETS5 or higher.



**Ordering info:**  
Item number single license: A-0001-008  
Item number 5 volume license: A-0001-019  
Item number 10 volume license: A-0001-020

UPDATES ENSURE  
THE CONTINUOUS  
IMPROVEMENT  
OF OUR PRODUCTS  
PLEASE CHECK:  
[WWW.ISE.DE](http://WWW.ISE.DE)

\*Only in combination with other system components that support reliable communication, e.g. Gira KNX/IP Router.

# COSY WARM AND EFFICIENT – SAUNIER DUVAL SNUGGLES UP WITH KNX

## SMART CONNECT KNX Saunier Duval

Together with the system controller MiPro Sense, the SMART CONNECT KNX Saunier Duval offers integration between eBUS and KNX. With the SMART CONNECT KNX Saunier Duval, you can now also switch your heating system to "standby mode." This allows you to reduce the room temperature setpoint values in all rooms (if desired) and minimise heating.

Do you wish to be able to react to short-term changes in use quickly and easily (longer than usual periods of absence, visits by friends, parties etc.)? With the SMART CONNECT KNX Saunier Duval the times and setpoint values for heating and hot water can be changed temporarily to your current requirements.



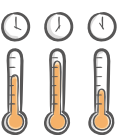
### A mode for long evenings

The night mode of the heating system can, for example, easily be set to a later point in time with the push of a button for the well being of guests at a later hour as well.



### Informed in detail

Conveniently obtain key information directly from your heating system. Whether you are on the sofa or looking at the panel, you can read important data such as the hot water temperature, the circulation pump status or the minimum setpoint flow temperature for cooling mode quickly and clearly on your KNX visualisation display.



### Controlling heating as needed

Effective immediately, times and setpoint values for heating and hot water can be easily and quickly entered into the visualisation or any other operating device. This saves energy, as the system only works when it's needed.

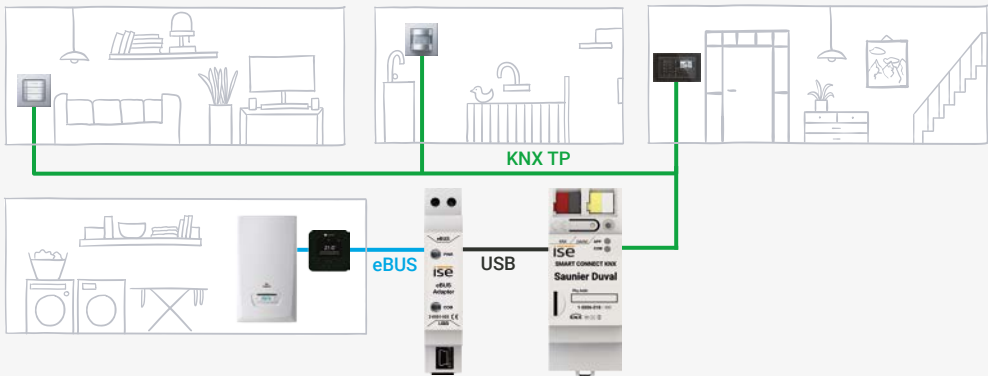
## + POINTS

- + Save energy during longer absences
- + Integration of heating in usage scenarios
- + Display of temperature and error status for up to eight heat generators
- + An overview of consumption and yield values
- + Integration into visualisations, e. g. Gira HomeServer

## HOW IT WORKS

### Communication + Installation

The SMART CONNECT KNX Saunier Duval is simply connected to the eBUS of your KNX installation. Use the ETS to make configurations, carry out set up and Bob's your uncle.



MiPro Sense

awb

Bulex

Saunier Duval

Glow•worm

Hermann  
Saunier Duval

protherm

## FEATURES

- Control of operation mode and temperature setpoint values for up to three heating zones
- Control of operation mode and temperature setpoint value for hot water supply
- System information like service mode, error messages, date and time, outside temperature and system status
- Heating circuit status values: Pump status, flow setpoint temperature, flow temperature, minimum flow setpoint temperature for cooling mode, heating curve for each heating circuit
- Hot water status values: Circulation pump status, charging pump/3-way valve status, hot water temperature
- Display of temperature and error status for up to eight-heat generators
- Yield values of solar systems and heatpumps
- Consumption values for hot water supply and heating (electricity and gas)
- Handover protocol from installer to system integrator
- Simple integration into KNX (can be completely configured via ETS)
- Easy-to-understand structure in the ETS5 thanks to channels
- Extensions via firmware updates

## TECHNICAL DATA

### Gateway

Rated voltage:	DC 24 V to 30 V
Power consumption:	1,2 W
IP communication:	Ethernet 10/100 BaseT
KNX communication:	KNX/TP, S-Mode
KNX medium:	TP1-256
Connections:	1x RJ45 1x USB Connection and branching terminals for KNX and 24 V
Ambient temperature:	0 °C to +45 °C
Dimensions:	2 HP (DRA plus)

### eBUS Adapter

Rated voltage:	Supply via eBUS and USB Power
Power consumption:	0,1 W
Connections:	Mini USB B eBUS via 2-pole screw terminal
Ambient temperature:	0 °C to +45 °C
Dimensions:	1 TE (REG)

**Note:** Power supply via external DC 24 V. Set consists of eBUS adapter and gateway. Only for systems with the system controller MiPro Sense. Saunier Duval includes all trademarks of SDGB. For ETS5 or higher.

UPDATES ENSURE  
THE CONTINUOUS  
IMPROVEMENT  
OF OUR PRODUCTS  
PLEASE CHECK:  
[WWW.ISE.DE](http://WWW.ISE.DE)



**Ordering info:**  
Item number: S-0001-017



# EVERYTHING'S POSSIBLE WITH THE PROGRAMMABLE SMART CONNECT KNX Programmable



From electricity meter to heating: With the SMART CONNECT KNX Programmable, third-party devices can be connected to the KNX bus in an simple and reliable way. This enables individualised connection logic to be developed in just a few days. The barrier to the world of building automation has never been this low.

For communication with the third-party system, the IP and USB interfaces can be used. The Programmable is the first successful affordable alternative to costly device development. Not only is the low price of the device itself impressive, but its further development is affordable as well. Either C# or VB.Net can be used to implement the application. This means that widely used and free programming tools can readily be used.

+ POINTS

- + Simple integration of third-party systems into KNX
- + Ready-certified KNX device
- + Connect third-party systems via IP or USB
- + Execution of .NET application (C# or VB.Net)
- + Comprehensive SDK
- + Protection of own application against unintentional duplication

## FEATURES

- Programming of the application in C# or VB.Net
- Up to 64 KNX communication objects (variable bit length)
- Version 1-0004-005: 1x IP and 1x USB connection
- Version 1-0005-006: 2x IP connection
- Ready-certified KNX device (can be completely configured via ETS)\*
- Extensions via firmware updates

UPDATES ENSURE  
THE CONTINUOUS  
IMPROVEMENT  
OF OUR PRODUCTS  
PLEASE CHECK:  
[WWW.ISE.DE](http://WWW.ISE.DE)

## TECHNICAL DATA

Rated voltage:	DC 24 V to 30 V
Power consumption:	2 W (Ethernet Version: 2x RJ45) 3 W (USB Version: RJ45 + USB with 300 mA)
IP communication:	Ethernet 10/100 BaseT
KNX communication:	KNX/TP, S-Mode
KNX medium:	TP1-256
Connections:	2x RJ45 with integrated switch (Ethernet version) RJ45 + USB (USB version) Connection and branching terminals for KNX and 24 V
Ambient temperature:	0 °C to +45 °C
Dimensions:	2 HP (DRA plus)

**Note:** Power supply via external DC 24 V. For ETS5 or higher.

### Ordering info:



Item number:  
2x RJ45  
1-0005-006

Item number:  
1x USB, 1x RJ45  
1-0004-005

\*The KNX certification for the SMART CONNECT KNX Programmable is limited to the interworking ability with KNX products from other manufacturers.

# POWERED BY PROGRAMMABLE

OUR CATEGORY FOR PRODUCTS  
BASED ON THE ISE SMART CONNECT KNX PROGRAMMABLE.



## THE SAFEST, MOST CONVENIENT WAY OF OPENING A DOOR. EKEY KNX CONNECT.

EKEY KNX CONNECT. WE CONNECT EKEY WITH  
YOUR SMART HOME.

Fingerprints have not only been a resounding success on smartphones and tablets, but also in access control for companies or private residential buildings.

Blocking and lost or stolen keys will become a thing of the past with an ekey fingerprint access solution – you always have your finger with you.

NOT AVAILABLE FROM ISE.  
GET IT HERE:  
[WWW.NETYARD.DE/EKEY](http://WWW.NETYARD.DE/EKEY)

### Technical data and retailer info:



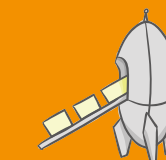
**NETYARD AG**  
Schanzenstr. 40  
40549 Düsseldorf  
Germany

igt@netyard.de  
[www.netyard.de/ekey](http://www.netyard.de/ekey)

## WOULD YOU LIKE TO JOIN US?

Would you too like to integrate  
your products and services  
into KNX? Let us know:

Phone: +49 441 68006-11  
E-mail: [sales@ise.de](mailto:sales@ise.de)



## E3/DC STORES YOUR ELECTRICITY AND IS DESIGNED TO INCORPORATE KNX.

The S10 Hauskraftwerk home power station is a classic in the E3/DC range. Featuring a solar power inverter, energy management and online portal, this all-in-one system stores solar electricity efficiently and provides power to devices right when they need it. This means the Hauskraftwerk electricity storage system and the central power switching unit are rolled into one, allowing E3/DC customers to achieve a very high level of self-sufficiency.

E3/DC has also developed the unique TriLINK® technology for this home power station. It provides backup power supply with solar re-charging in the event of a power failure. E3/DC's KNX CONNECT module is based on the PROGRAMMABLE and integrates the S10 series home power station into KNX.

NOT AVAILABLE FROM ISE.  
GET IT HERE:  
[WWW.E3DC.COM](http://WWW.E3DC.COM)

### Technical data and retailer info:

**E3/DC GmbH**  
Karlstraße 5  
49074 Osnabrück  
Germany  
Phone: +49 541 760268-0  
Fax: +49 541 760268-199

info@e3dc.com  
[www.e3dc.com](http://www.e3dc.com)



# ACCESS TO YOUR KNX INSTALLATION SIMPLY VIA RADIO

## KNX RF USB-STICK



Convenient and wireless access to a KNX installation from a PC or laptop.

The device serves as an interface to KNX installations via radio, using the KNX RF standard. This enables the communication of KNX devices with PC tools.

The interface structure corresponds to a common USB stick (USB 2.0 type A). The device does not feature any operating or display elements.

A KNX RF/TP media coupler is required in the KNX system for communication with fixed-wired KNX TP components.

### + POINTS

- + Wireless communication between PC and KNX/RF (radio)
- + Start-up and troubleshooting via ETS5 or higher
- + Supports longer telegrams (extended frames)
- + Supports the start-up of KNX/RF Secure devices
- + No additional USB driver required

## FEATURES

- Supports the common EMI protocol (cEMI)
- Supply of device via the PC's USB interface
- Connection of PC and KNX via KNX RF radio
- Extensions via firmware updates
- Address assignment, programming and troubleshooting of KNX devices via ETS from version 5
- Required standard Windows drivers are installed or activated automatically when device is inserted

## TECHNICAL DATA

Rated voltage:	DC 5 V
Frequency:	868,3 MHz
Transmission power:	max. 25 mW
Transmission range in free field:	100 m (typical)
USB connection:	2.0 Typ A
KNX communication:	RF1.R, S-Mode
Ambient temperature:	-10 °C to +55 °C
Dimensions:	approx. 21 mm x 59 mm x 7,5 mm

**Note:** For ETS5 or higher.



**Ordering info:**  
Item number: 3-0001-004



## EXPERIENCE ISE PRODUCTS LIVE TEST LIVING IN A KNX HOME

Experience exclusive ease of living. Visitors can experience intelligently networked solutions with all their senses in the smart house in Rhaderfehn or a luxury private loft in Alling. You can even combine your visit with an overnight stay if you wish.

**ise** is a technology partner in the Connected Comfort brand alliance. Our products are integrated into viega and Vaillant systems and via our Remote Access. We provide the technological backbone to make your home smarter.

**Connected Comfort** is an alliance between the Gira, Jung, Brumberg, Dornbracht, Revox, Schüco, Vaillant and Warema brands. The common goal is to make buildings more intelligent across all trades and create completely new living experiences to a premium level.

**connected comfort**  
premium smart living  
Connected Comfort Zentrale  
Hohenzollernstraße 5, 30161 Hannover, Germany  
Phone: +49511 16767-120  
E-mail: [info@connected-comfort.de](mailto:info@connected-comfort.de)  
Web: [www.connected-comfort.de](http://www.connected-comfort.de)

powered by

**GIRA**

**JUNG**

**BRUMBERG**

**DORN  
BRACHT**

**REVOX**

**SCHÜCO**

**Vaillant**

**viega**

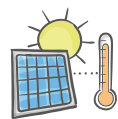
**warema**



# EASY ACCESS ON VAILLANTS GEOTHERM/3 HEAT PUMP

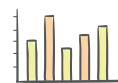
## SMART CONNECT Modbus Vaillant

As a Modbus TCP/IP gateway, the ISE SMART CONNECT MODBUS VAILLANT offers access to a Vaillant geoTHERM/3 heatpump, as well as to three Vaillant VR60 mixer modules and up to six Vaillant VR90 remote control devices. The established Modbus TCP/IP standard (e.g. Schneider SmartStruxure, Fidelix) enables the convenient integration of Vaillant heatpumps into the building technology.



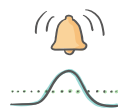
### Combination solar-power system and heatpump

Utilise the sun's energy efficiently and link your solar-power system to your heating system. The ISE SMART CONNECT MODBUS VAILLANT provides you with the required access to the heatpump.



### Variable optimisation

Have your BMS record and visualise the system values of the heatpump. Using automatic recordings in the form of diagrams and tables, you can analyse and further refine the effectiveness of the optimisations of various different variables.



### Monitoring

Create limit values using your BMS which, if overshoot or undershot, trigger the system to notify you automatically. This gives you the option of quickly responding to deviations. Remedy problems before convenience is impaired. Uncomfortably cold shower water is a thing of the past.

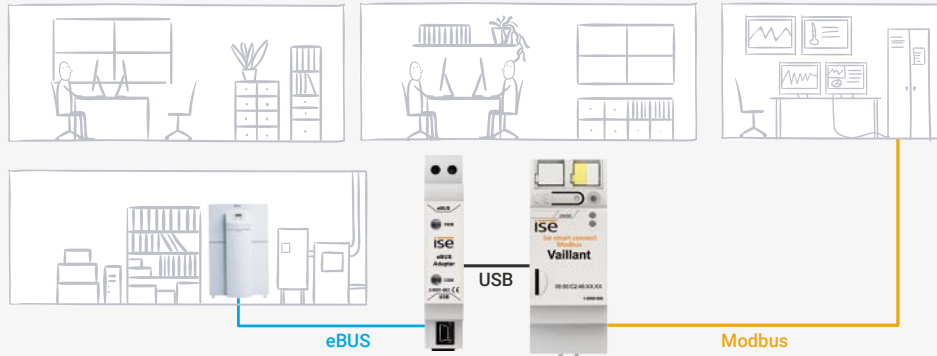
+ POINTS

- + Convenient integration of Vaillant heatpumps into the building technology
- + Control of a geoTHERM/3 heatpump via Modbus TCP/IP
- + Up to three VR60 mixer modules and up to six VR90 remote control devices can also be controlled
- + Recommended by Vaillant

## HOW IT WORKS

### Communication + Installation

The ISE SMART CONNECT MODBUS VAILLANT is easy to connect with the network and eBUS. Network settings for the configuration of the Vaillant system dimensioning are simply configured via the device website.



Modbus



geoTHERM/3

## FEATURES

- Control of operating mode and temperature setpoint values for the heating circuits
- Control of operating mode for the heatpump
- Control of operation mode for up to three mixer modules
- Control of operation mode and temperature setpoint value for hot water supply
- Control of the operation mode of an auxiliary heater
- Access to status information such as temperature and pressure sensor values for integration into the building technology
- Easy configuration of system dimensioning using the device web page
- Extensions via firmware updates

## TECHNICAL DATA

### Gateway

Rated voltage:	DC 24 V to 30 V
Power consumption:	1,2 W
IP communication:	Ethernet 10/100 BaseT
Communication:	Modbus TCP/IP
Connections:	1x RJ45 1x USB Connection and branching terminals for 24 V
Ambient temperature:	0 °C to +45 °C
Dimensions:	2 HP (DRA plus)

### eBUS Adapter

Rated voltage:	Supply via eBUS and USB
Power consumption:	0,1 W
Connections:	Mini USB B eBUS via doubly terminal screw
Ambient temperature:	0 °C to +45 °C
Dimensions:	1 TE (REG)

**Note:** Supply via external DC 24 V. Set consisting of eBUS adapter and gateway. Compatible with Vaillant geoTHERM/3 V WS220/3 - 460/3 heatpumps.

UPDATES ENSURE  
THE CONTINUOUS  
IMPROVEMENT  
OF OUR PRODUCTS  
PLEASE CHECK:  
[WWW.ISE.DE](http://WWW.ISE.DE)

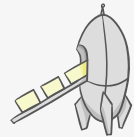


**Ordering info:**  
Item number: S-0002-007

## SALES, SUPPORT & CONTACT

## CONSULTATION AND SALES

**Phone** +49 441 68006-11  
**Fax** +49 441 68006-15  
**E-mail** [sales@ise.de](mailto:sales@ise.de)



Further national and international specialist electrical trade partners can be found on our website  
**[www.ise.de/en](http://www.ise.de/en)**

## CONTACT

ise Individuelle Software und Elektronik GmbH  
Osterstraße 15  
26122 Oldenburg, Germany

**Phone** +49 441 6800-0  
**Fax** +49 441 68006-10  
**E-mail** [info@ise.de](mailto:info@ise.de)



## SUPPORT

Should you have any technical questions on products you have already purchased, please contact our support department from Monday through Friday from 08:30 a.m. to 4:30 p.m. or by e-mail.

**Phone** +49 441 68006-12  
**Fax** +49 441 68006-15  
**E-mail** [support@ise.de](mailto:support@ise.de)



**UPDATES ENSURE  
THE CONTINUOUS  
IMPROVEMENT  
OF OUR PRODUCTS  
PLEASE CHECK:  
WWW.ISE.DE**

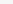
More information, technical documentation, data sheets software, the latest firmware and much more can be found on our website under the corresponding products. If you can't find what you're looking for, please get in touch with us.

**NEWS!  
NEWS!  
NEWS!  
LETTER!  
LETTER!  
LETTER!**



With the ise Newsletter you are up to date about new features and changes. Just subscribe to our newsletter on: [\*\*www.ise.de/en/news/newsletter\*\*](http://www.ise.de/en/news/newsletter)

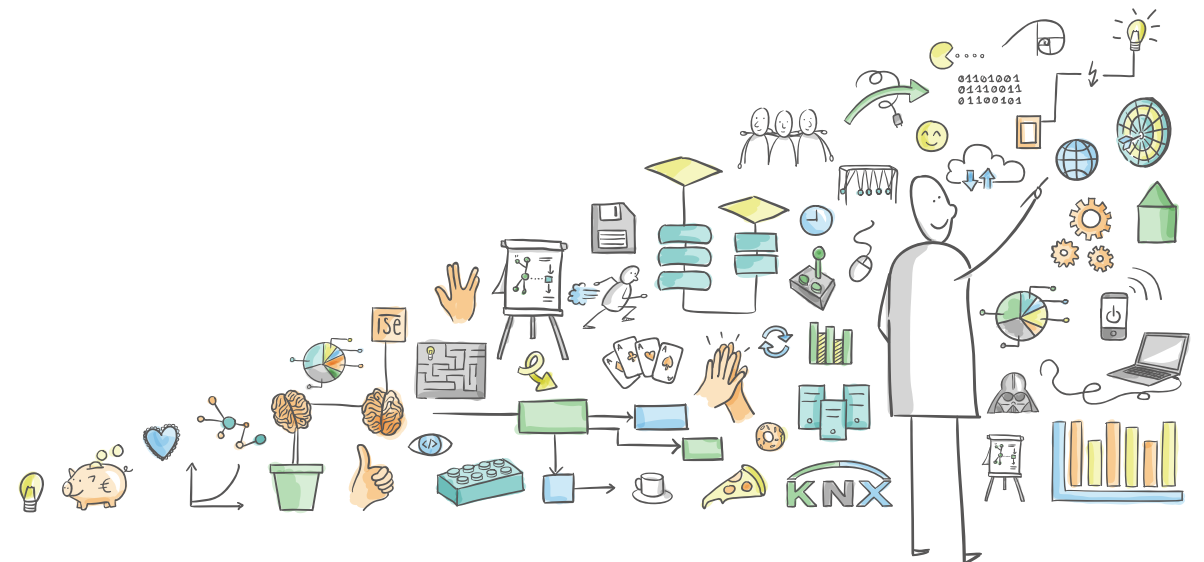
## DON'T MISS OUT

 @IndividuelleSoftwareundElektronikGmbH

 @ise\_gmbh  
www.instagram.com/ise\_gmbh



ise Individuelle Software und Elektronik GmbH





STATUS:  
**OCTOBER**  
**2021**

ise Individuelle Software und Elektronik GmbH  
Osterstraße 15  
26122 Oldenburg, Germany

**Phone** +49 441 68006-11  
**Fax** +49 441 68006-15  
**E-mail** [sales@ise.de](mailto:sales@ise.de)